

# **VPN guide**

by AuditSME - Web based Auditing Software MPERS

<b>1. Server</b> .....	<b>3</b>
1.1. Install Softether VPN server .....	<b>3</b>
1.2. Server Configuration .....	<b>6</b>
1.3. Create New Users .....	<b>11</b>
<b>2. Workstation</b> .....	<b>13</b>
2.1. Install Softether VPN client .....	<b>14</b>
2.2. Workstation Configuration .....	<b>16</b>

## 1. Server

1.1 Installation of VPN manager(#installation-on-server-2)

1.2 Configuration on server(#server-configuration)

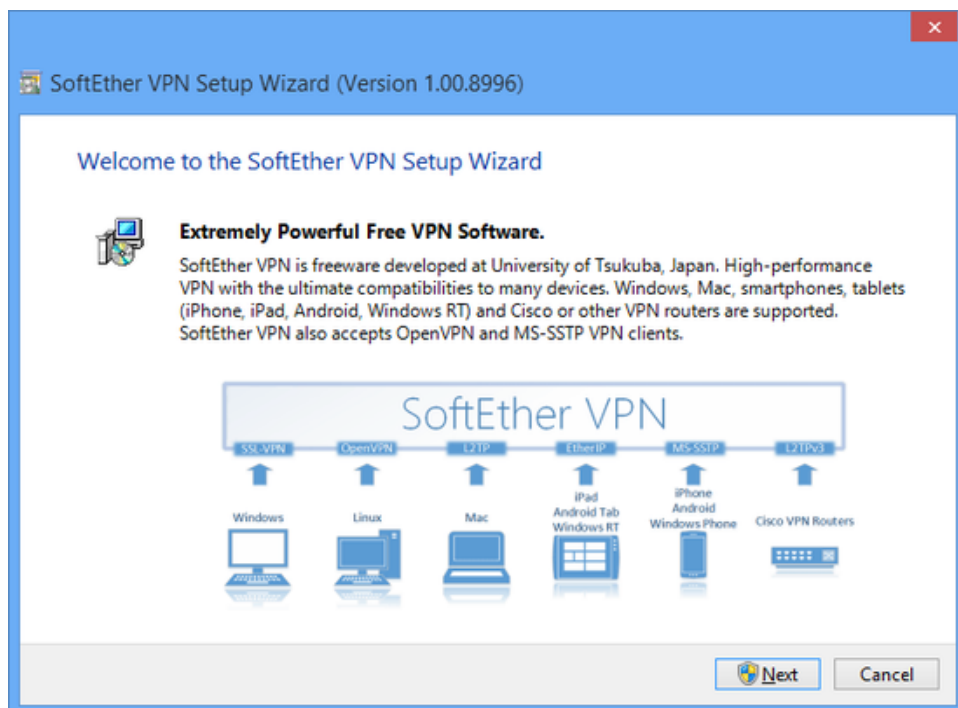
1.3 Create users(#create-new-users)

### 1.1. Install Softether VPN server

#### Preparing the Installer File

The installation of the Windows version of SoftEther VPN Server is very easy as it is almost completely performed automatically. To install VPN Server, you can download the latest VPN Server installer file from the SoftEther VPN Project website (<http://www.softether.org/>(<https://www.softether.org/>)).

The VPN Server Windows version installer file is an executable file with the name **vpnserver-build-number-win32-x86.exe**.

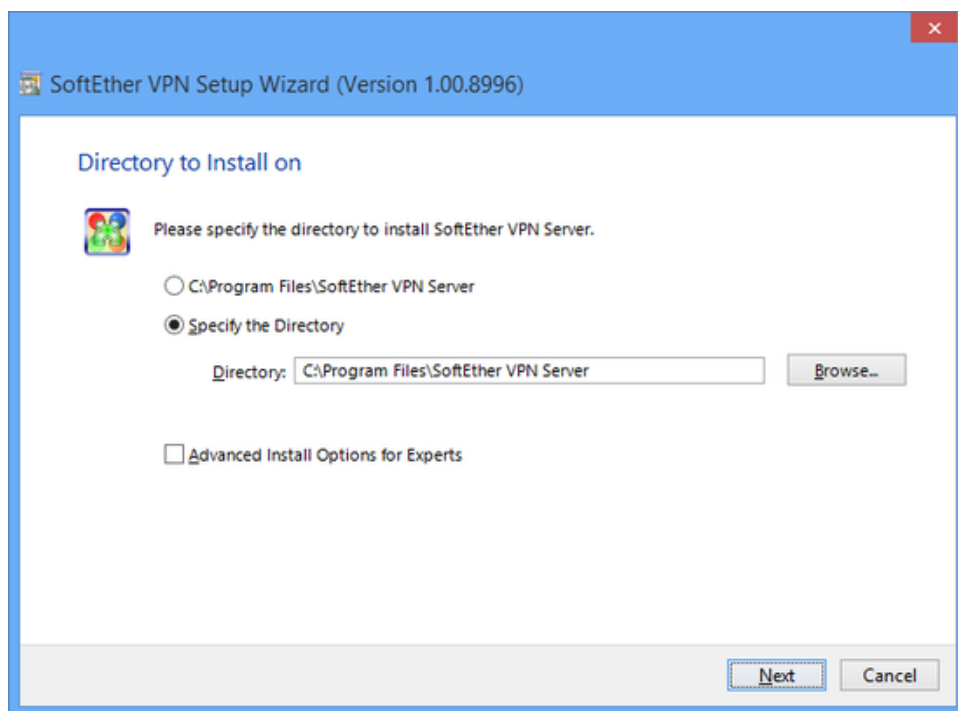


(<https://www.softether.org/@api/deki/files/294/=7-2-1.png>)

*VPN Server Installer*

## Starting the Installer

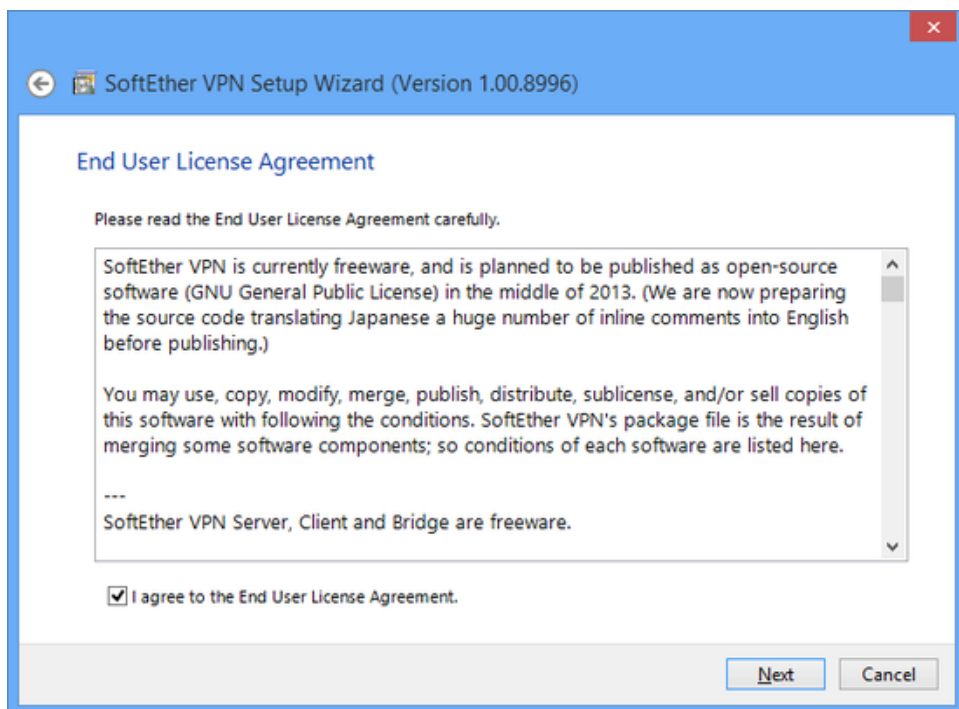
Start the installer by double-clicking the VPN Server installer file. The Windows Installer-based installer starts automatically. Using the installation wizard, you can select the name of the installation directory. (By default, the program is installed to **Program Files\SoftEther VPN Server** on the system drive.) The VPN Server process writes large log files to the installation directory, so we recommend selecting an area on the hard drive that has high transfer rate and a large amount of unused space.



(<https://www.softether.org/@api/deki/files/295/=7-2-2.png>)

### *Specifying the VPN Server Installation Directory.*

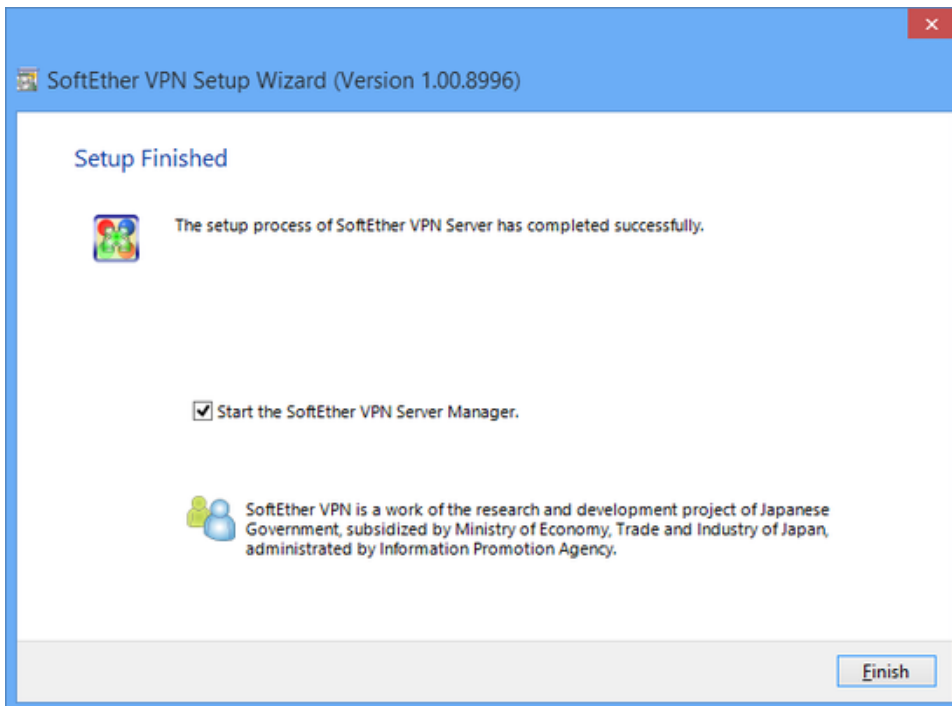
During the installation, the end-user license agreement may be displayed. Please thoroughly read the agreement. If you agree to the terms and conditions, the installation continues.



(<https://www.softether.org/@api/deki/files/296/=7-2-3.png>)

#### *VPN Server End-User License Agreement.*

The installer automatically registers the SoftEther VPN Server system service and sets the program to automatically start in background mode at Windows startup.

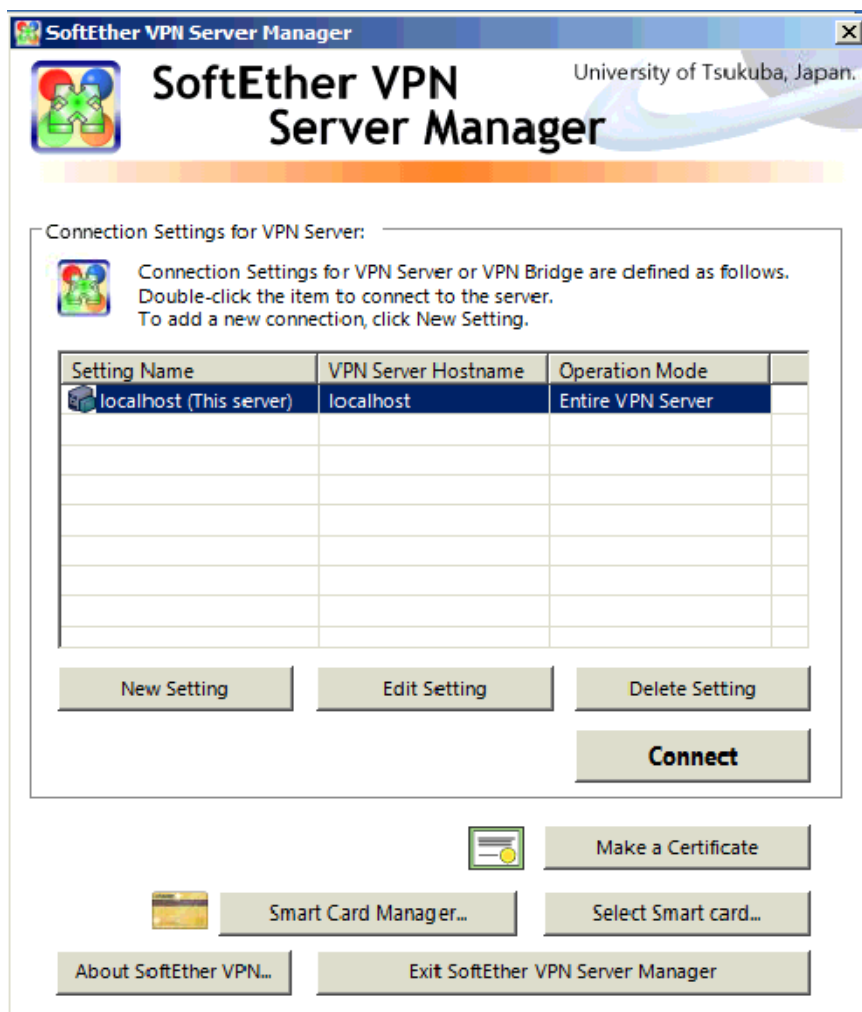


(<https://www.softether.org/@api/deki/files/297/=7-2-7.png>)

*VPN Server Install Finished.*

## 1.2. Server Configuration

1. Open Softether VPN server manager.



([https://auditsme.com/wp-](https://auditsme.com/wp-content/uploads/2018/03/server-8.png)

[content/uploads/2018/03/server-8.png](https://auditsme.com/wp-content/uploads/2018/03/server-8.png))

2. Create a new VPN server. You are required to key in setting name, port number, and administrator password.

**New Connection Setting**

Please configure the connection setting for the VPN Server or the VPN Bridge to manage.

Setting Name:

**Destination VPN Server:**  
Specify the host name or IP address, and the port number and the Virtual Hub on the destination VPN Server.

Host Name:

Connect to Localhost

Port Number:  (TCP Port)

**Proxy Server as Relay:**  
You can connect to a VPN Server via a proxy server.

Proxy Type:  Direct TCP/IP Connection (No Proxy)  
 Connect via HTTP Proxy Server  
 Connect via SOCKS Proxy Server

**Select Administration Mode and Enter Password**  
You can connect to VPN Server using either Server Admin Mode or Virtual Hub Admin Mode.

Server Admin Mode allows you manage entire VPN Server and all Virtual Hubs.

Virtual Hub Admin Mode allows you manage only one Virtual Hub for which you hold privileges.

Server Admin Mode     Virtual HUB Admin Mode

Virtual Hub Name:

Please enter the password to connect administration mode.

Password:

Do not Save Admin's Password

(<https://auditsme.com/wp-content/uploads/2018/03/server-9.png>)

3. Change administrator password as the diagram stated below.

**Change Administrator Password of localhost**

Change the administrator password of the server localhost. Enter the new password and click OK.

New Password:

Confirm Password:

(<https://auditsme.com/wp-content/uploads/2018/03/server-10.png>)

4. After that, select the purpose of setting up VPN (remote access VPN server).

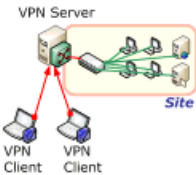
**SoftEther VPN Server / Bridge Easy Setup**

By using this setup you can easily setup a SoftEther VPN Server or VPN Bridge for the following use and purpose. After exiting the setup, you can use the VPN Server Manager to freely configure more advanced settings.

Select the type of VPN server you want to build. Multiple types can be selected together.

**Remote Access VPN Server**

The Remote Access VPN Server allows VPN Client computers in remote locations to access to the existing Ethernet segments, for example company LAN. Any VPN Clients who is connecting to the VPN Server will be able to access to the network as if they are connected directly and physically to the network.



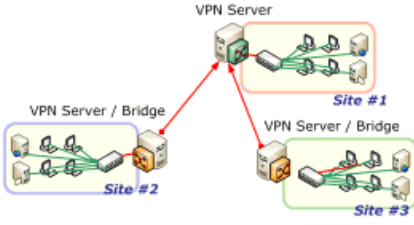
**Site-to-site VPN Server or VPN Bridge**

Site-to-site VPN is a VPN configuration to connect between two or more remote Ethernet segments. Each of the sites are connected together, and become the same segment at Layer-2 level. It enables any computers of each sites to communicate to each other as if there is a single network.

Select the role of this VPN Server:

VPN Server that Accepts Connection from Other Sites (Center)

VPN Server or VPN Bridge at Each Site (Edge)



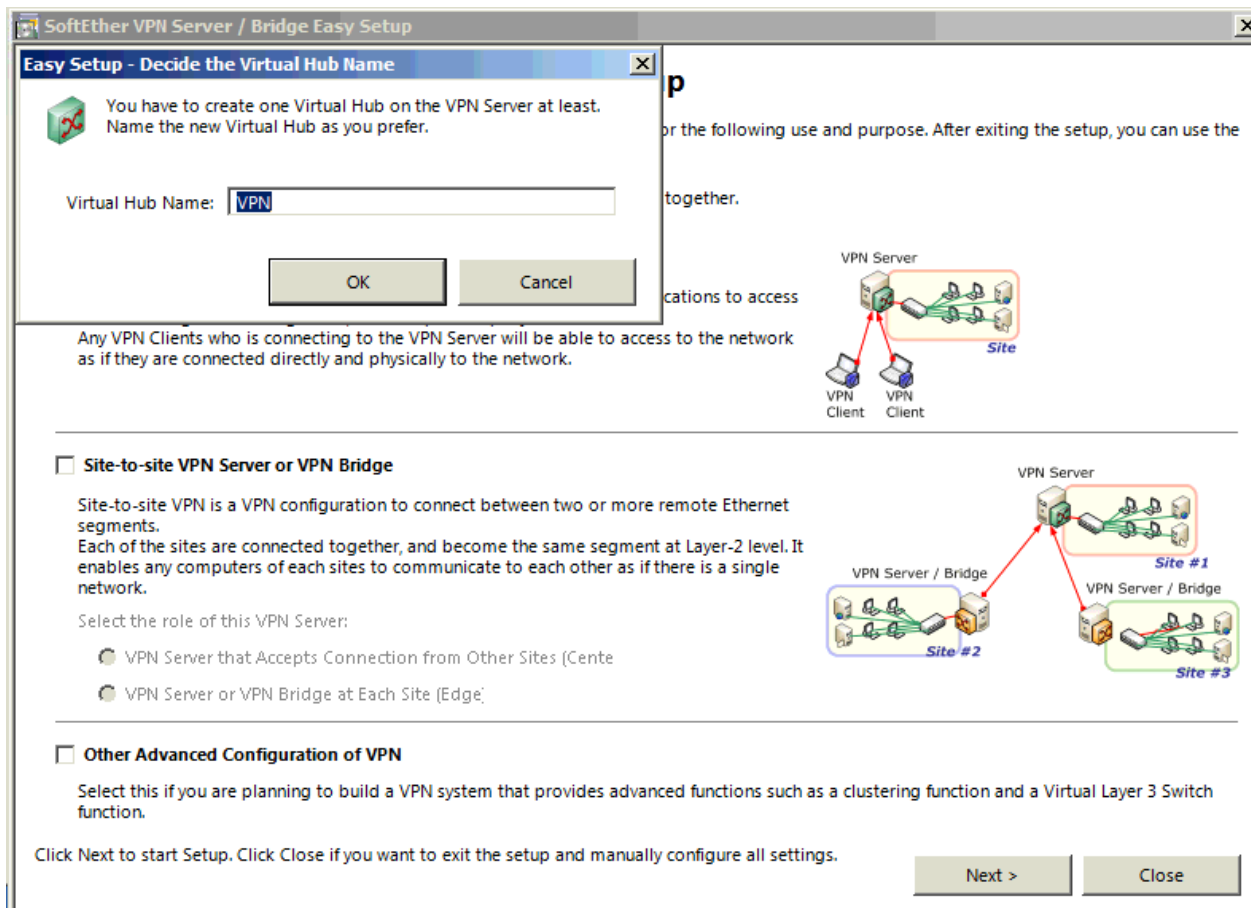
**Other Advanced Configuration of VPN**

Select this if you are planning to build a VPN system that provides advanced functions such as a clustering function and a Virtual Layer 3 Switch function.

Click Next to start Setup. Click Close if you want to exit the setup and manually configure all settings.

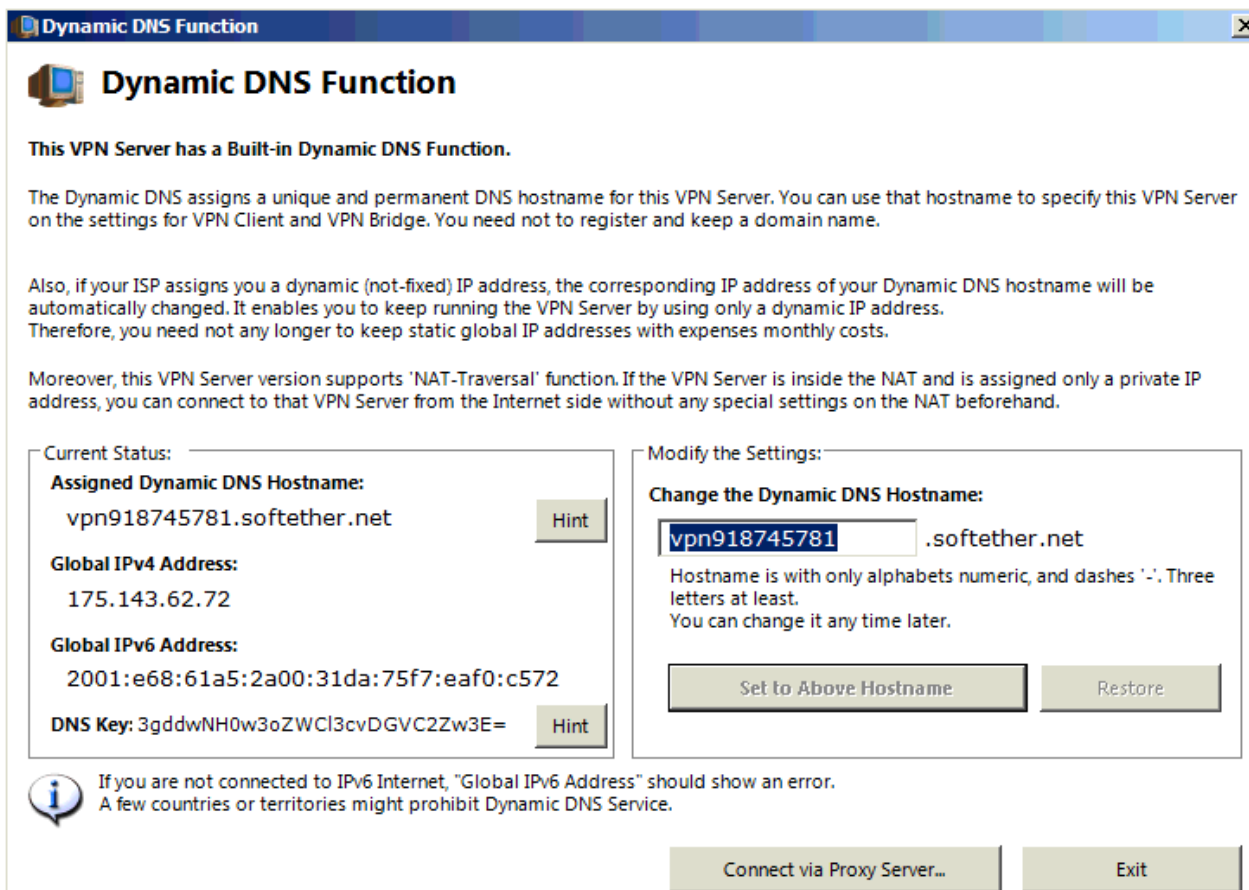
(<https://auditsme.com/wp-content/uploads/2018/03/server-11-1.png>)

5. Create a virtual hub name.



(<https://auditsme.com/wp-content/uploads/2018/03/server-12.png>)

6. Create DDNS for your server. You may change the default Dynamic DNS Host Name.

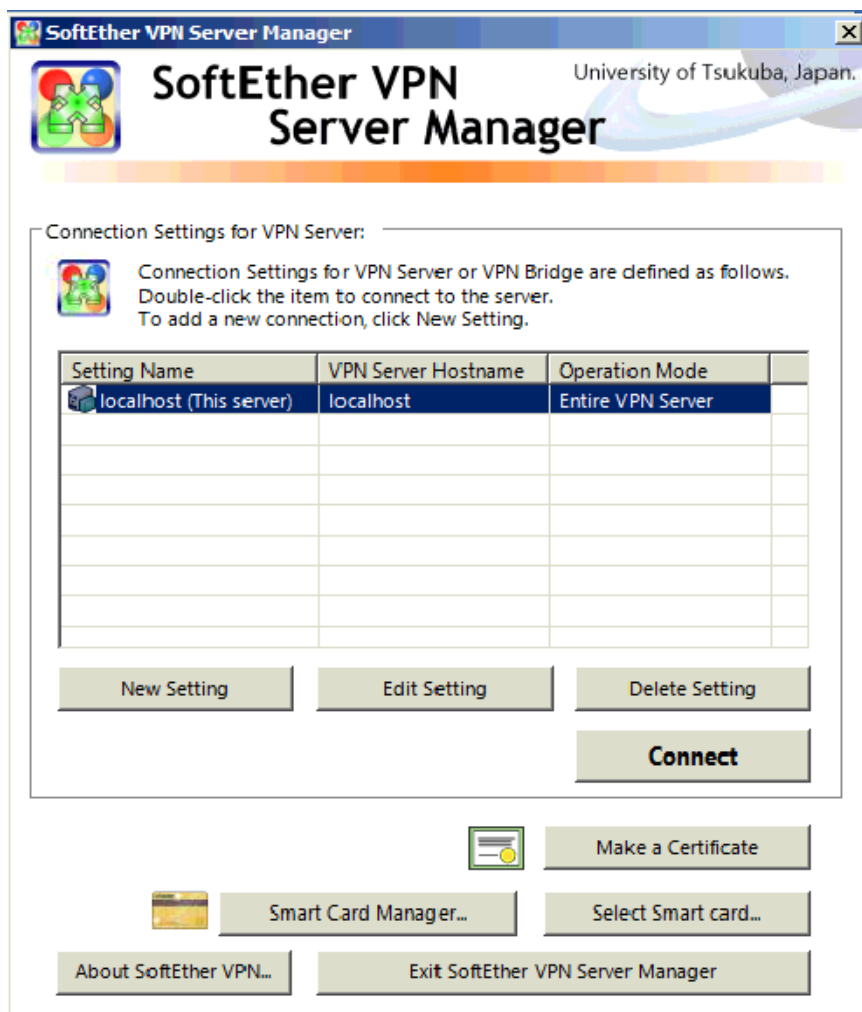


(<https://auditsme.com/wp-content/uploads/2018/03/server-13.png>)

7. Server configuration has been completed. You could proceed to the next steps, which is the **creation of new users** for the VPN network so that user can connect to the server with **Softether VPN client**.

### 1.3. Create New Users

1. Open Softether Server Manager and left click on localhost "this server".



(<https://auditsme.com/wp->

<content/uploads/2018/03/server-8-1.png>)

2. Click on create users.
3. Create user information.



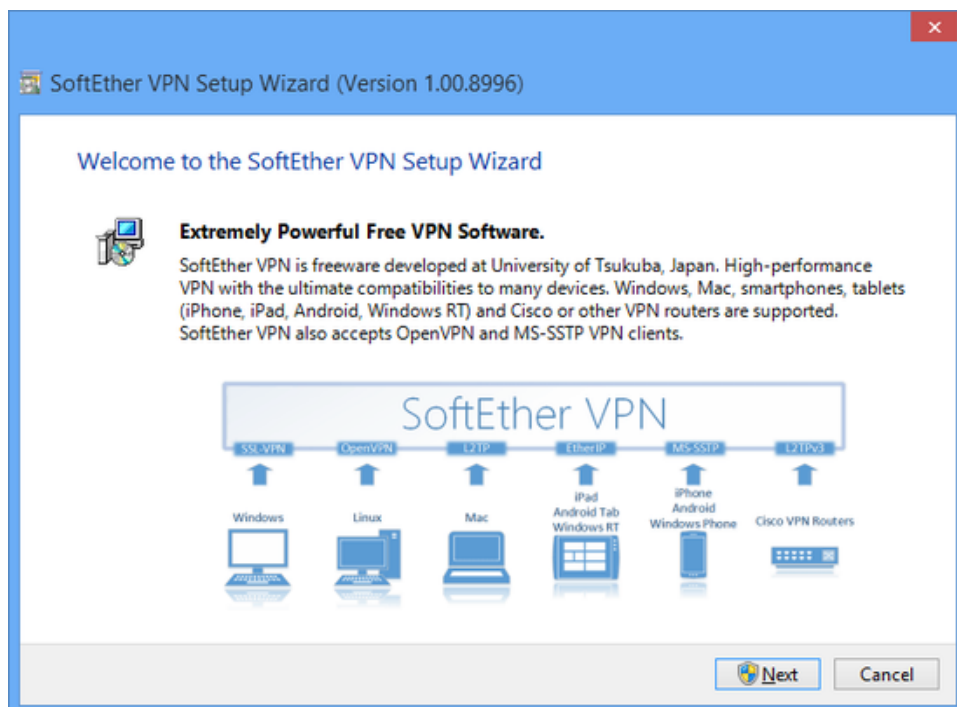
2.1 Installation of VPN client(#installation-on-workstation-2)

2.2 Configuration on workstation(#configuration-for-workstation)

## 2.1. Install Softether VPN client

### Preparing the Installer File

The installation of the Windows version of SoftEther VPN Client is very easy as it is almost completely performed automatically. To install VPN Client, you can download the latest VPN Client installer file from the SoftEther VPN Project website (<http://www.softether.org/>(<https://www.softether.org/>)).

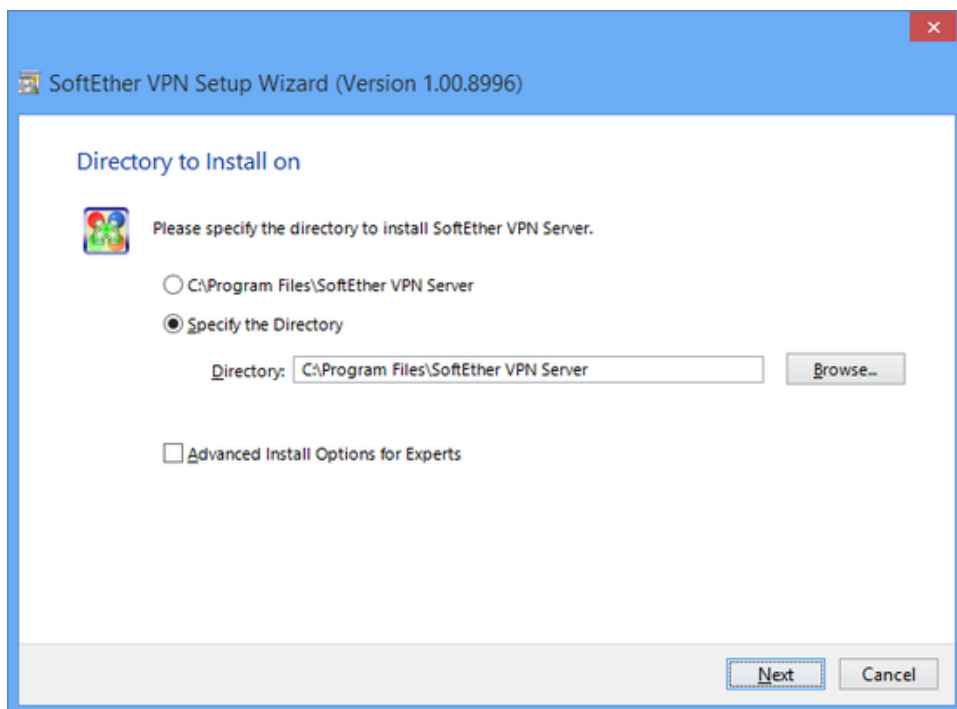


(<https://www.softether.org/@api/deki/files/303/=8-2-1.png>)

*VPN Client Installer*

### Starting the Installer

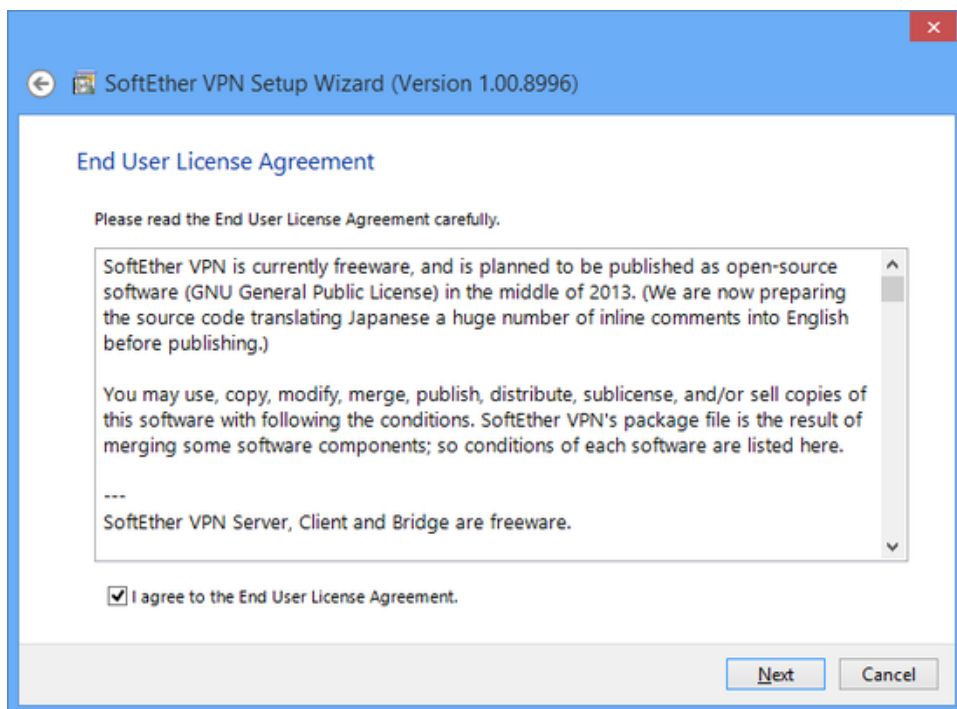
Start the installer by double-clicking the VPN client installer file. Using the installation wizard, you can select the name of the installation directory. (By default, the program is installed to **Program Files\SoftEther VPN client** on the system drive.) The VPN Server process writes large log files to the installation directory, so we recommend selecting an area on the hard drive that has a large amount of disk space and is quickly accessible.



(<https://www.softether.org/@api/deki/files/304/=8-2-2.png>)

*Specifying the VPN Client Installation Directory.*

During the installation, the end-user license agreement may be displayed. Please thoroughly read the agreement. If you agree to the terms and conditions, the installation continues.



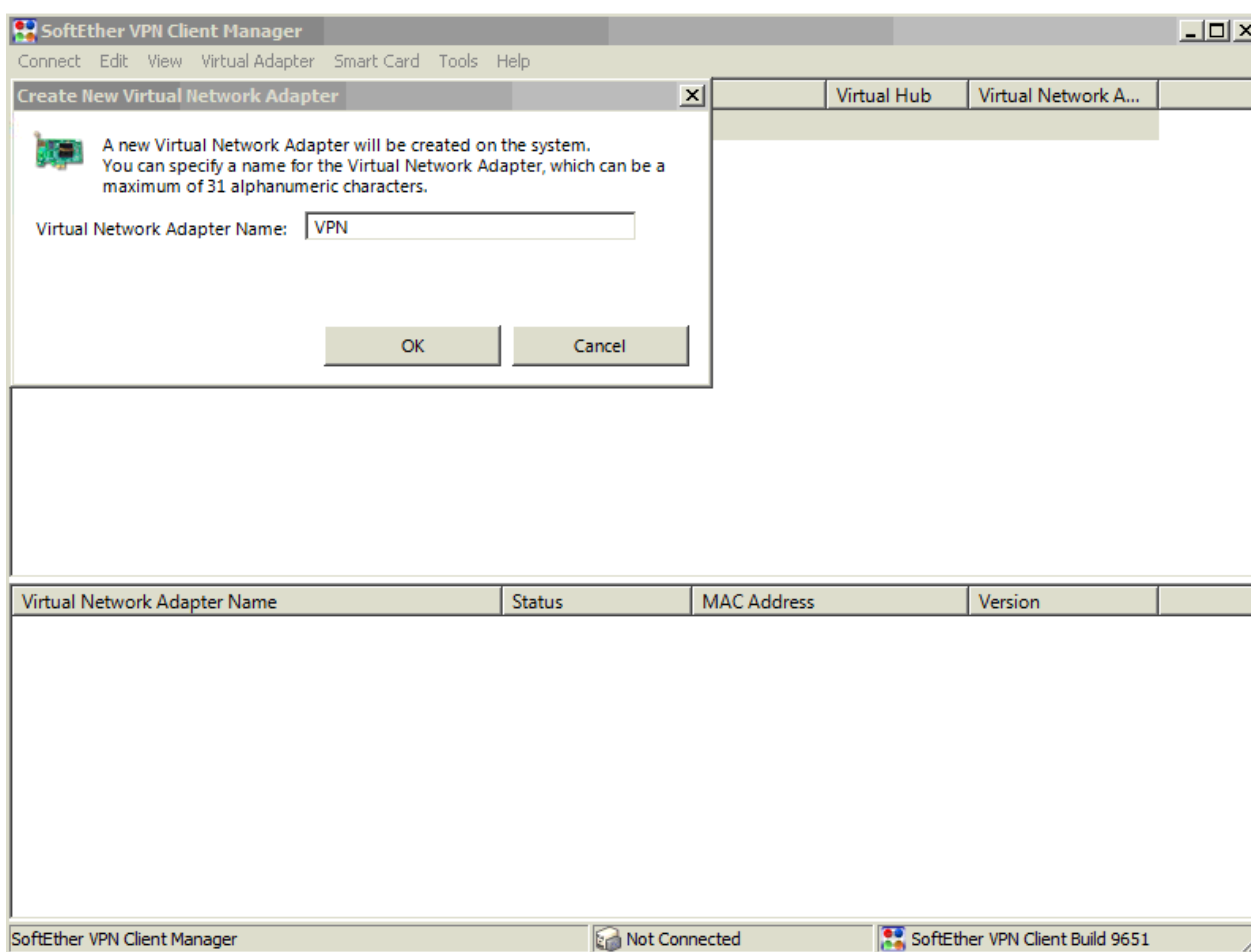
(<https://www.softether.org/@api/deki/files/305/=8-2-3.png>)

### VPN Client End-User License Agreement.

The installer automatically registers the SoftEther VPN Client system service and sets the program to automatically start in background mode at Windows startup.

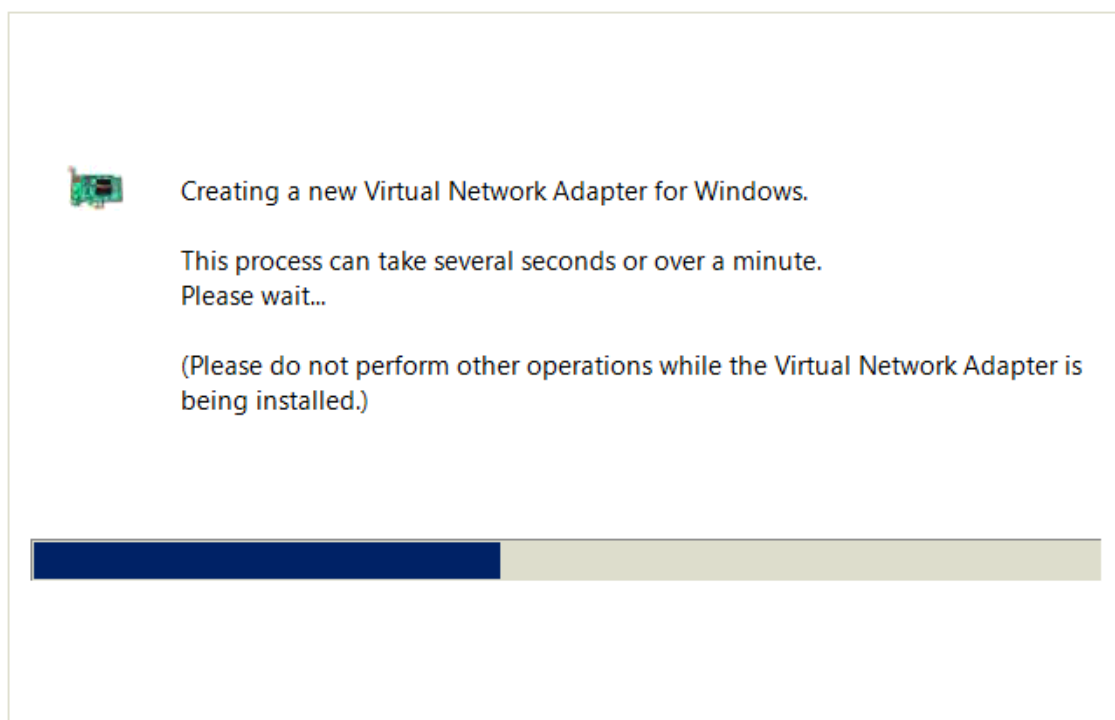
## 2.2. Workstation Configuration

1. Open Softether client manager.
2. Click on “Add VPN Connection”



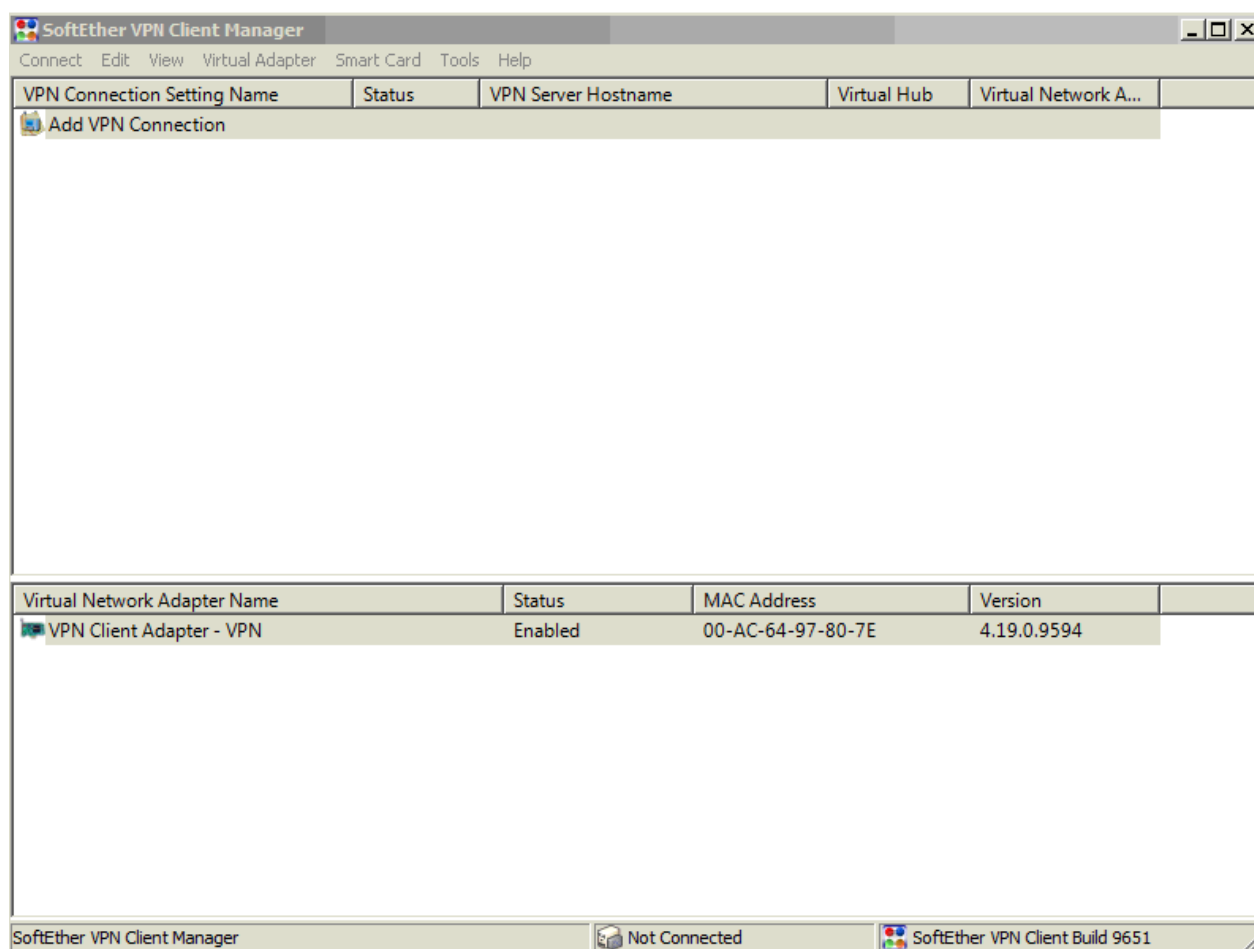
(<https://auditsme.com/wp-content/uploads/2018/03/client-10.png>)

3. The system will notify you to create a new network adaptor for VPN services.



(<https://auditsme.com/wp-content/uploads/2018/03/client-11.png>)

4. Click on “Add VPN connection” again.



(<https://auditsme.com/wp-content/uploads/2018/03/client-12.png>)

5. Insert the server information that has been configured at Softether VPN server manager.

Hostname:  
Port Number:  
Virtual Hub Name:

Username:  
Password:

**New VPN Connection Setting Properties**

Please configure the VPN Connection Setting for VPN Server.

Setting Name:

**Destination VPN Server:**  
Specify the host name or IP address, and the port number and the Virtual Hub on the destination VPN Server.

Host Name:   
Port Number:   Disable NAT-T  
Virtual Hub Name:

**Proxy Server as Relay:**  
You can connect to a VPN Server via a proxy server.

Proxy Type:  Direct TCP/IP Connection (No Proxy)  
 Connect via HTTP Proxy Server  
 Connect via SOCKS Proxy Server

**Server Certificate Verification Option:**

Always Verify Server Certificate

Hide Status and Errors Screens  Hide IP Address Screens

**Virtual Network Adapter to Use:**  
VPN Client Adapter - VPN

**User Authentication Setting:**  
Set the user authentication information that is required when connecting to the VPN Server.

Auth Type:   
User Name:   
Password:

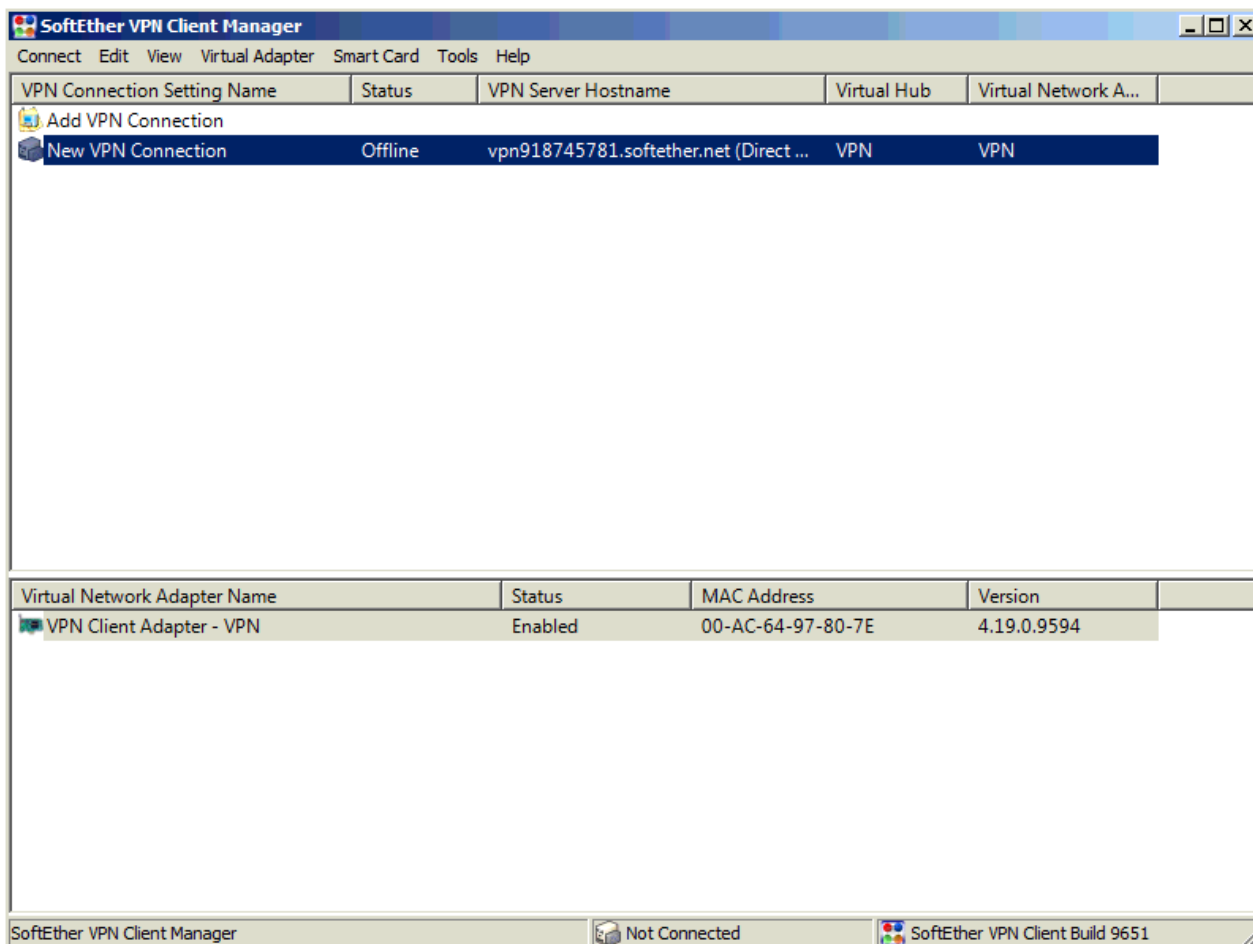
You can change the user's password on the VPN Server.

**Advanced Setting of Communication:**

Reconnects Automatically After Disconnected  
Reconnect Count:  times  
Reconnect Interval:  seconds  
 Infinite Reconnects (Keep VPN Always Online)  
 Do not use TLS 1.0

(<https://auditsme.com/wp-content/uploads/2018/03/client-13.png>)

6. Click on the created VPN connection. If connection successful, the status network will be "Connected"



(<https://auditsme.com/wp-content/uploads/2018/03/client-14.png>)

### Important to note:

1. If you fail to access VPN server from a public network, you have to double check that whether you have set up "Port Forwarding" at your modem router.
2. You have to install Softether VPN client manager on your server computer as well so that we could obtain the IP address of the server on that VPN network.
3. You are advised to fix server IP address. Once static IP address has been set up on your server, other workstations could connect to the audit software or timesheet software with the following domain name:

<http://<ip-address-of-server>/audit>

<http://<ip-address-of-server>/timesheet>